

GIS Maps on the Internet with focus on Community Development

City's Web Site Address: www.ci.santa-rosa.ca.us or www.srcity.org

Note: Map viewing software is not compatible with Macs, unless you are running Windows. Also the software is not compatible with Mozilla, Netscape, or other browsers, only Microsoft Internet Explorer.

The screenshot shows the City of Santa Rosa website. At the top left is the city logo. A navigation bar contains links for HOME, VISITORS, RESIDENTS, BUSINESS, GOVERNMENT, and DEPARTMENTS. Below this is a large banner image of a child in a swimming pool. To the right of the banner is a search bar and a dropdown menu labeled "I Would Like To..." with "PLEASE SELECT" as the current option. Below the search bar is an error message: "Error Message: The underlying connection was closed. A connection that was expected to be kept alive was closed by the server. Stack Trace: at Synergy\WebParts:NOAAWeather.populateWeatherData() at Synergy\WebParts:Weather.CreateChildControls()". Below the error message is a "Spotlight News" section with a headline "Courthouse Square Renovation" and a small image. To the right of this is a "Recent Videos" section with a video thumbnail titled "Tour of CA Video (Long)". Below the video is a "Highlights" section with a link to "City Calendar". A purple arrow points to the "Highlights" link.

The screenshot shows the "Highlights" section of the website. It contains a list of links: [City Calendar](#), [City Council Meetings](#), [City Facilities and Locations](#), [City Officials](#), [Downtown Santa Rosa](#), [Environmental Stewardship](#), [Maps and GIS Services](#), [News Archive](#), [ONLINE Services](#), [Police Press Release](#), [Tour of California](#), and [Video Library](#). A purple arrow points to the "Maps and GIS Services" link.

At the home page, scroll down to Highlights.

Then Click on Maps and GIS Services

To view the Zoning Map, go to Intermediate Interactive Maps. This requires installing a map viewer and creating a free account with a login.

CITY OF SANTA ROSA

GIS, MAPS AND DOCUMENTS

Skip To: Content | Footer | Accessibility | Translate | Printer Friendly. Font Size: [+] [-]

HOME VISITORS RESIDENTS BUSINESS GOVERNMENT **DEPARTMENTS**

GIS, Maps and Documents | City of Santa Rosa \ Departments \ Administrative Services \ Information Technology \ **GIS, Maps and Documents**

Advanced Interactive Maps
Beginner Interactive Maps
Downloadable PDF Maps
Intermediate Interactive Map
Other Fee-Based Services

Search Santa Rosa

Welcome to the City of Santa Rosa Geographic Information System (GIS) page

Here you will find a wide assortment of PDF Maps you can download directly to your PC to view or print. We also have Interactive Maps for the City and County that allow you to zoom in and out, control which GIS layers are displayed and get various kinds of information through Map Tips and Reports. Additionally, you can get information about other GIS services provided by the City of Santa Rosa.

[Downloadable PDF Maps](#)
Free, requires Adobe Reader

[Beginner Interactive Map](#)
Free, requires viewer install

[Intermediate Interactive Maps](#)
Free, requires viewer install and login

[Advanced Interactive Maps](#)
Not free, requires viewer install and login (Coming Soon)

[Other Fee-Based Services](#)
Printed Maps, Labels, etc

Feel free to contact our GIS Coordinator at mhargreaves@scity.org if you have any questions.

The City of Santa Rosa does not guarantee the accuracy, currency, completeness, or usefulness of any information displayed or implied herein. The City of Santa Rosa provides this information on an "as is" basis without warranty of any kind, expressed or implied, including but not limited to warranties, merchantability or fitness for a particular purpose, and assumes no responsibility for any use or misuse of this information.

The City of Santa Rosa GIS Map Site - Microsoft Internet Explorer provided by City of Santa Rosa

File Edit View Favorites Tools Help

Address http://maps.ci.santarosa.ca.us/

City of Santa Rosa GIS MAP SITE

USERNAME:

PASSWORD:

Login

FacilitiesView

User Help Install

New User Account

Does not guarantee the accuracy, currency, or usefulness of any information displayed or implied herein. The City of Santa Rosa provides this information on an "as is" basis without warranty of any kind, expressed or implied, including but not limited to warranties, merchantability or fitness for a particular purpose, and assumes no responsibility for any use or misuse of this information.


Local Statistics For questions or comments please contact [Site Administrator](mailto:SiteAdministrator@ci.santarosa.ca.us)
© 2008 FacilitiesView - division of [FacilitiesView](http://www.ci.santarosa.ca.us) Inc. All rights reserved.
Site Administrator

Create an account by clicking on User.

**CITY OF SANTA ROSA
GIS MAP SITE**

New User Account

Site Login > New User Account

 new | user

First Name

Last Name

Title

Company

E-mail

Address

City

State

Zip Code

Phone

Fax

Please fill in the form to obtain a user account. Your password must be at least 8 characters long.

Bold fields are required.

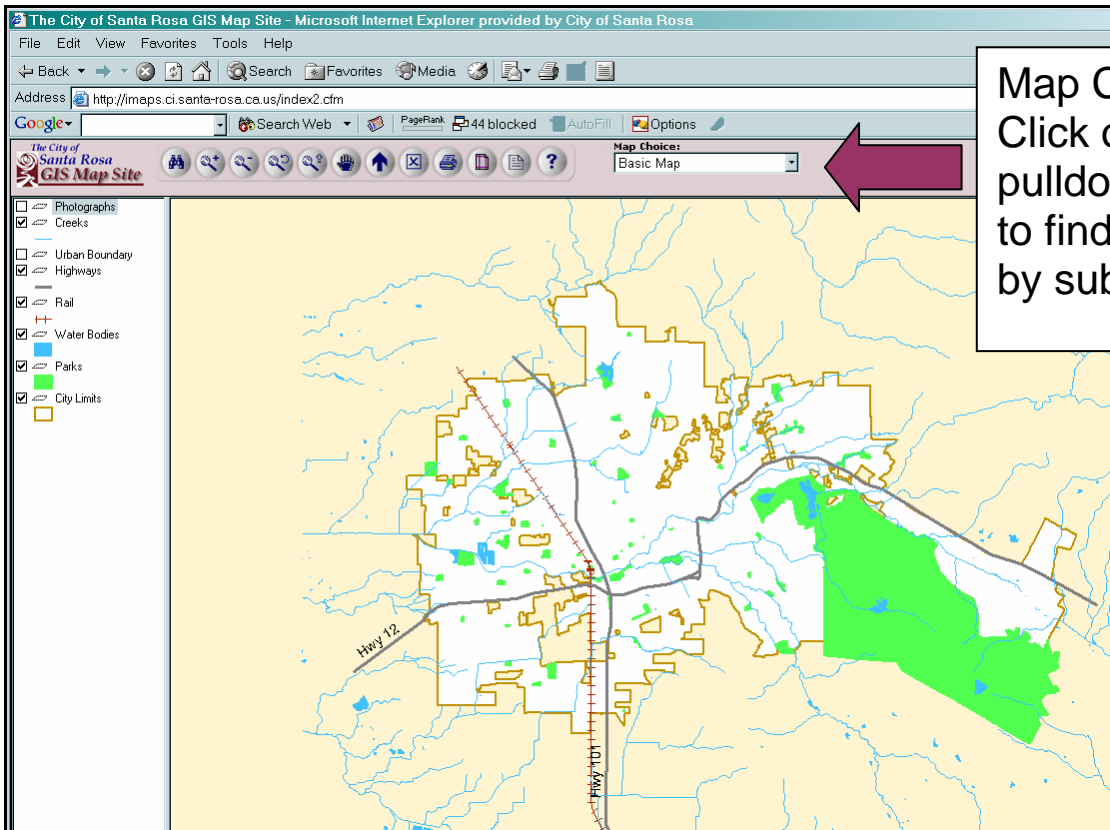
Password

Password (verify)

For questions or comments please contact [Mike Hargreaves](#).
© 2004, [FacilitiesMap](#), a division of [Websoft Developers](#), Inc. All rights reserved.

The username is assigned and is returned to your e-mail address right away.

Use this login and password each time you log on.



Map Choice: Click on the pulldown arrow to find the maps by subject.

To find Zoning information click on the pulldown arrow beside Basic Map and scroll down to Zoning.

To find Zoning information click on the arrow beside Basic Map and scroll down to Zoning.

This map shows the zoning designation for properties located within Santa Rosa city limits. Double click on the zoning area to link to the online zoning code to get basic zoning information like allowable uses and development standards. Please contact the Community Development Department at 707-543-3223 for further information on these properties.

Planned Development Layer. To see the Policy Statement or Development Plans for the layer of Planned Developments, turn on the layer in the table of contents on the right hand side by clicking in the box near the layer name. Zoom into an area and select the Planned Development with the Select Tool (the pointer) and then click on the Reports Tool. This opens a separate window that will list any of the available scanned documents in .pdf format. Click on one of them to open the scanned .pdf file. You must have Adobe Reader installed on your machine to view the .pdf files. Hovering over the Planned Development gives you the PD Number, Ordinance and Ordinance Date.

To find information about proposed development, click on the arrow beside Basic Map and scroll down to Pending Development.

This map shows pending and approved development projects in Santa Rosa. Projects shown are over 5000 square feet or 5 units in size. Projects that have been submitted for review but are not yet approved are labeled proposed. Projects that have been approved by City Staff, the Planning Commission or City Council are labeled approved. When a project is over 50% constructed, it is taken off this report.

As you hover the cursor over the map you will get a Map Tip with the following information:

Line 1 - Project Name
Line 2 - Activity Type or Planning Application Type
Line 3 - Status, either Proposed or Approved

Select a project by clicking on it with the arrow tool. Then using the reports tool, you will be able to get more details and information on the project.

To find information about historic landmarks, historic preservation districts and other potential historic neighborhoods click on the arrow beside Basic Map and scroll down to Historic Properties.

Double click on the property to see the State of California Department of Parks and Recreation Report for the following districts:

Burbank Gardens Historic Preservation District
Ridgway Historic Preservation District
Identified Northeast Roseland Historic Neighborhood
Other Potential Southwest Area Historic Neighborhood
These reports include a photo of the property.

Note: The General Plan is not shown on the GIS Maps; it is on another location on the website. To find this map, go to the Community Development page and click on Development Review, then click on General Plan. When you click on General Plan Land Use Diagram, the map, in .pdf file opens in another window.