



Santa Rosa Urban Reuse Project – Project Selection Study Session #2

Board of Public Utilities

November 15, 2007





Santa Rosa Urban Reuse Project

- Should the City build the first phase of the SRURP? If so,
- What is the first SRURP phase?
- When should the first SRURP phase be constructed?





BPU and Council Project Selection Process

- BPU Study Session #1 – Nov 1st
 - Predesign study results
 - Environmental Issues
 - Identify key decisions
 - Board discussion
- BPU Study Session #2 – Today
 - Staff provide details on project phases
 - Financing information
 - Board discussion
 - Board direction regarding key decisions
- Council Meeting – Dec 4th
 - Feedback on Board preferences
- BPU Meeting – Dec 6th
 - Consider Council input
 - Select project, recommend Council action
- Council Meeting – Dec 18th
 - Consider BPU recommendation
 - Select project





Document Availability

- Predesign Study Tech Memos – today
- CEQA Checklist – November 20
- Locations
 - www.SRCity.org/UrbanReuse
 - Purchase hard copy – ARC, 579-9096
 - Libraries
 - View at City Hall, MSCS, Laguna Plant
- E-mail notice to public Oct 26
- 1/4-page ad in PD





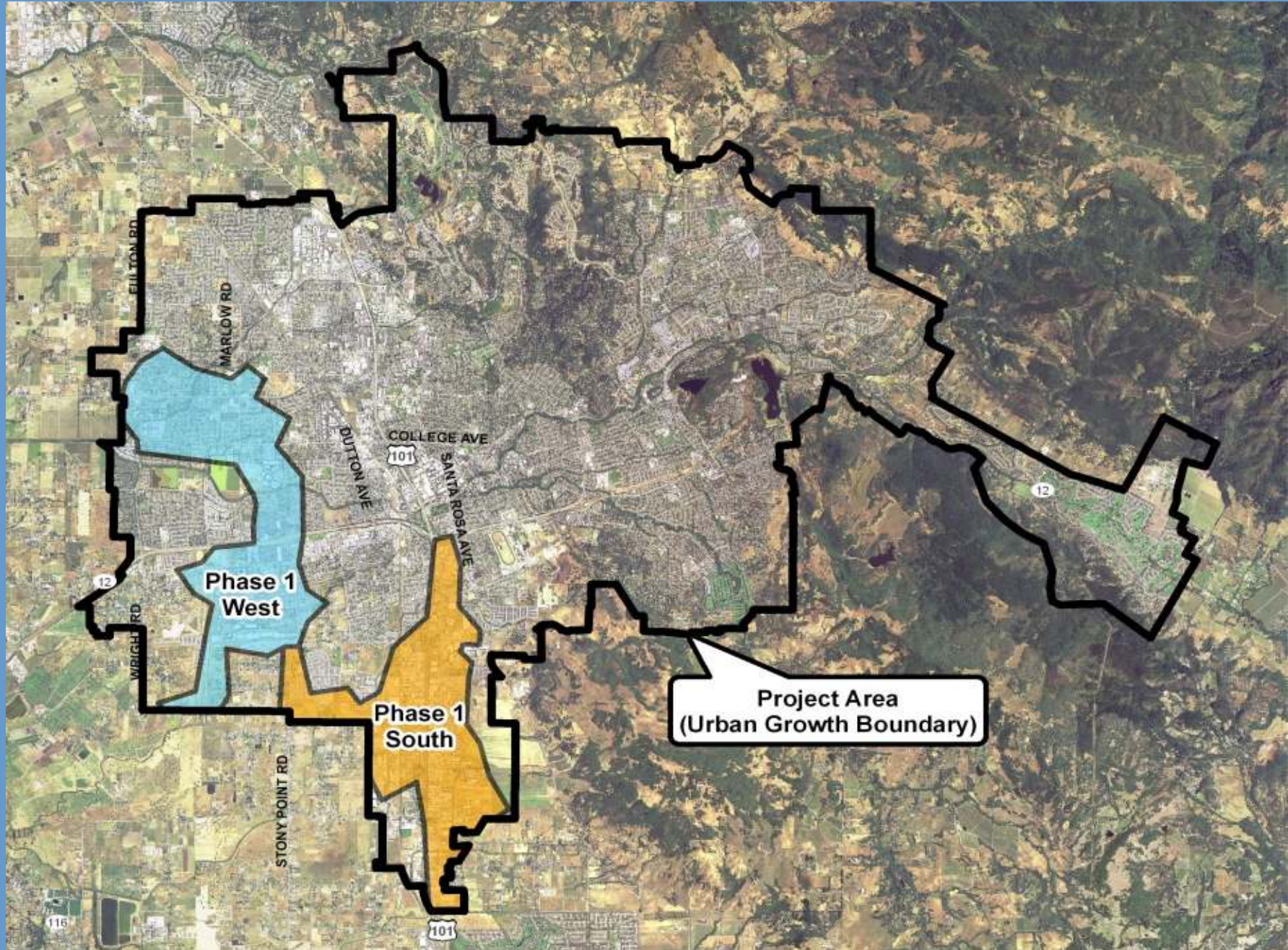
Proposed Criteria For Project Phase Selection

- Cost per MG potable offset/disposal
- Coordination with CIP projects
- Project timing vs. need
- Flexibility of implementation timing
- Revenue development





Phase 1 Options





Phase 1 Comparison

SRURP Phase	Exist Demand (MGY)	Future Demand (MGY)	Total Demand (MGY)	Est. Cost (x \$1,000)
Phase 1 West	204	44	248	\$36,655
Phase 1 South	77	170	247	\$36,355
Future Phases	255	219	474	\$79,590
Total SRURP	536	433	969	\$152,600





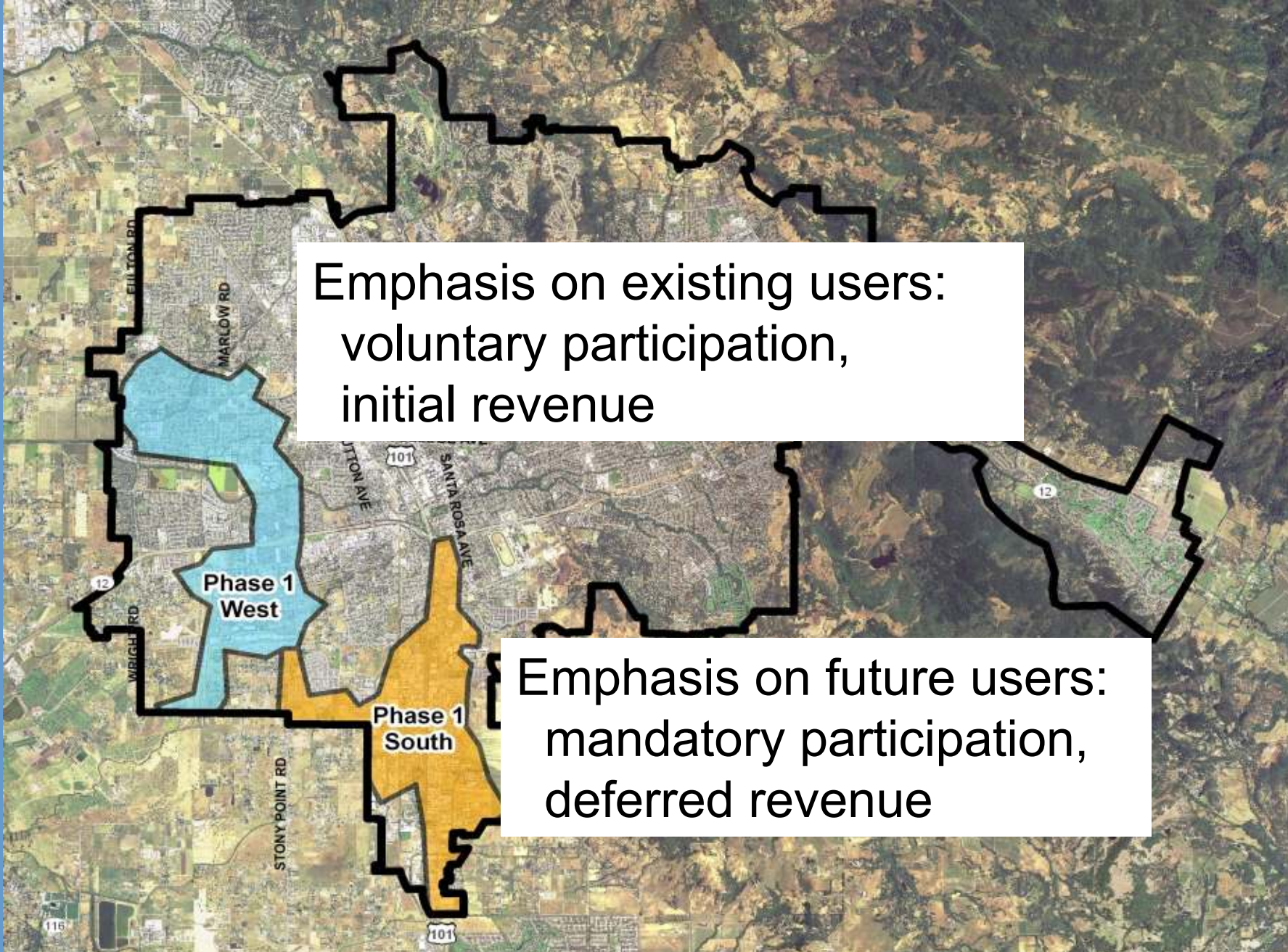
Unit Costs of Phase 1 Alternatives Are Similar

SRURP Phase	Total Demand (MGY)	Est. Cost (x \$1,000)	Unit Cost (\$1000/MG)
Phase 1 West	248	\$36,655	\$148
Phase 1 South	247	\$36,355	\$147
Future Phases	474	\$79,590	\$167
Total SRURP	969	\$152,600	\$157





Phase 1 Options



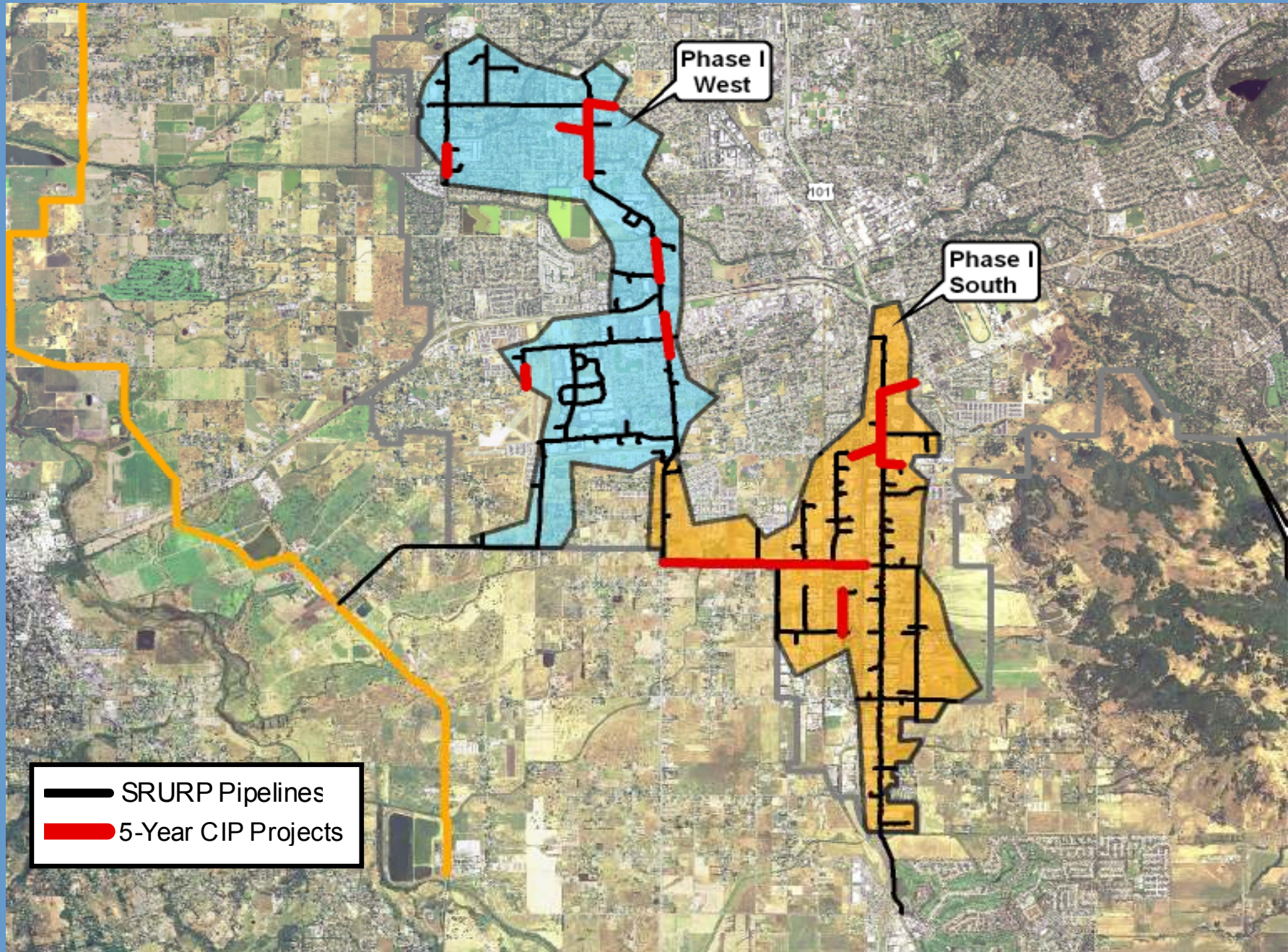
Emphasis on existing users:
voluntary participation,
initial revenue

Emphasis on future users:
mandatory participation,
deferred revenue



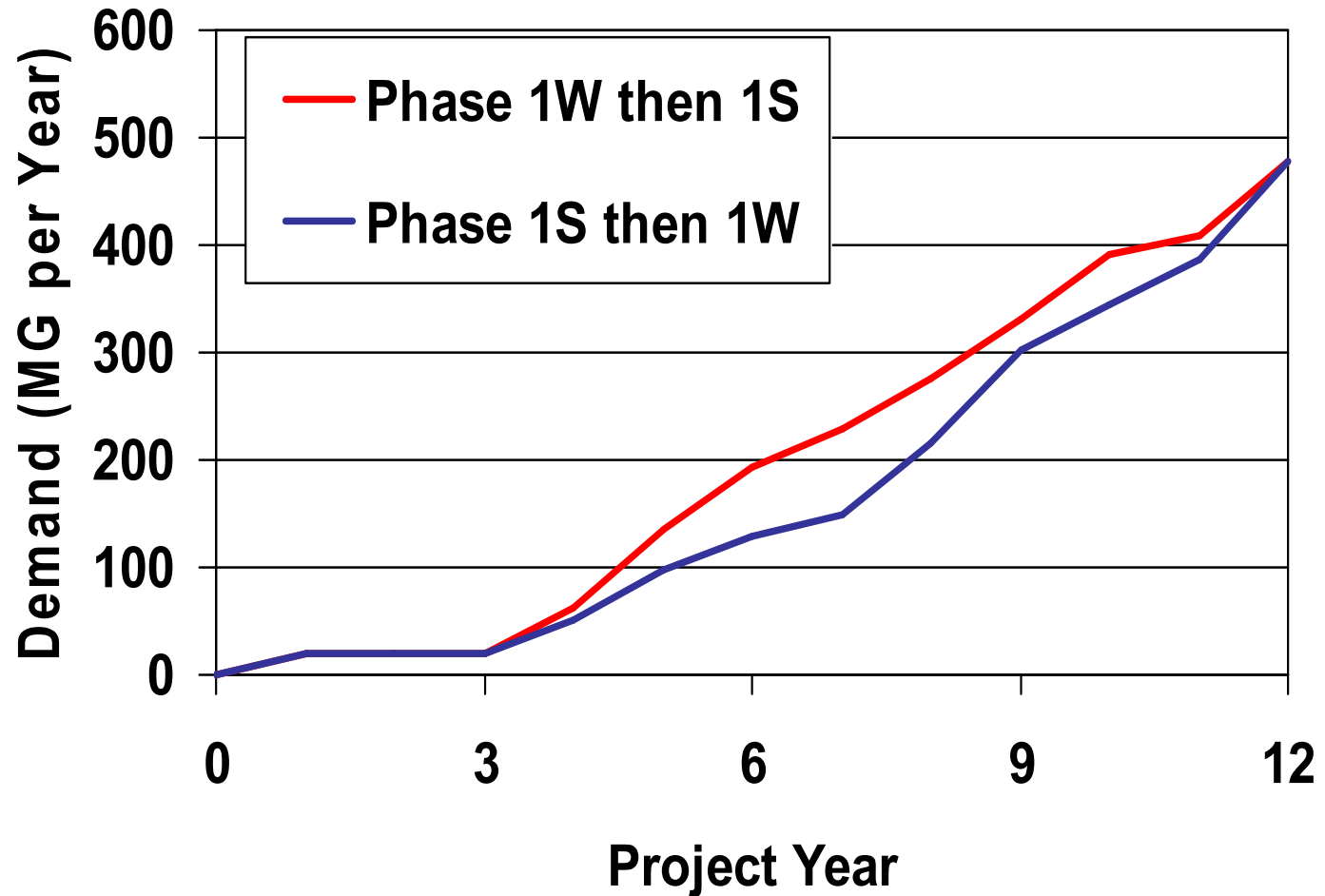


Coordination with CIP projects





Phase 1W Provides Supply and Disposal Benefits Sooner



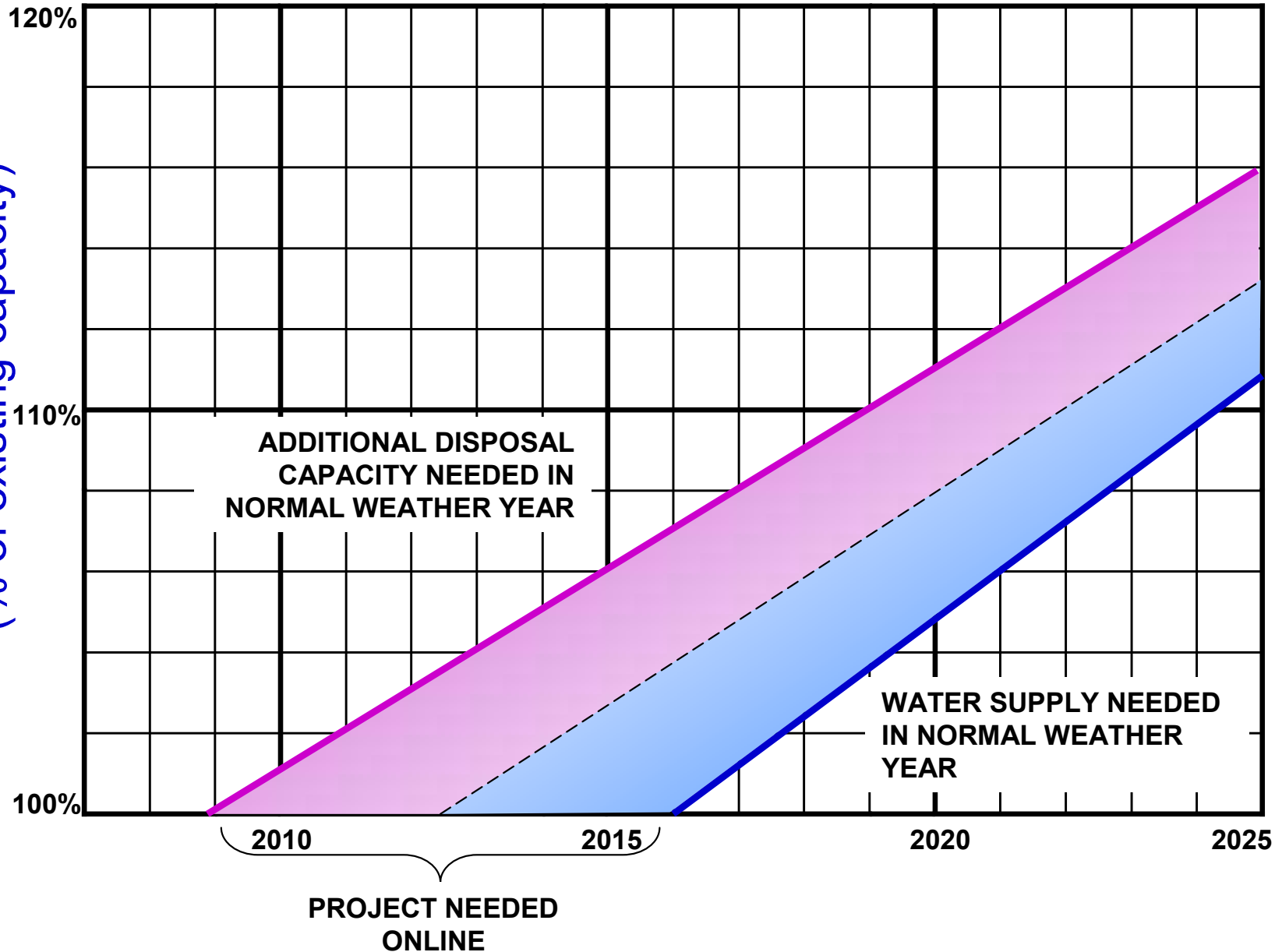
Assumptions:

- Existing demands converted within 2 years
- Future demands materialize over 15 years



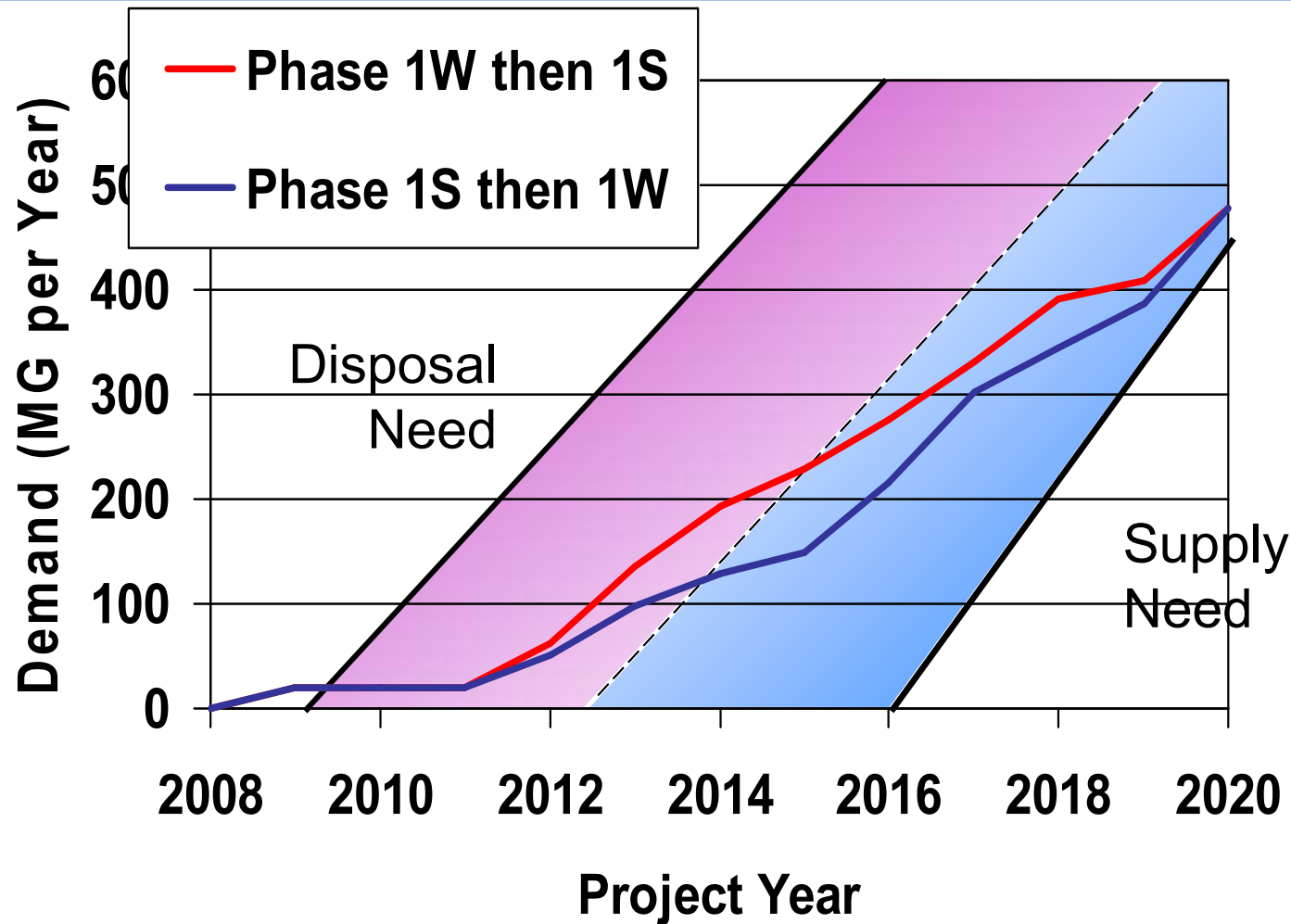
Timing of Phase 1 Based on Need

ADDITIONAL CAPACITY NEEDED
(% of existing capacity)





Phase 1W More Flexible to Meet Timing of Actual Needs

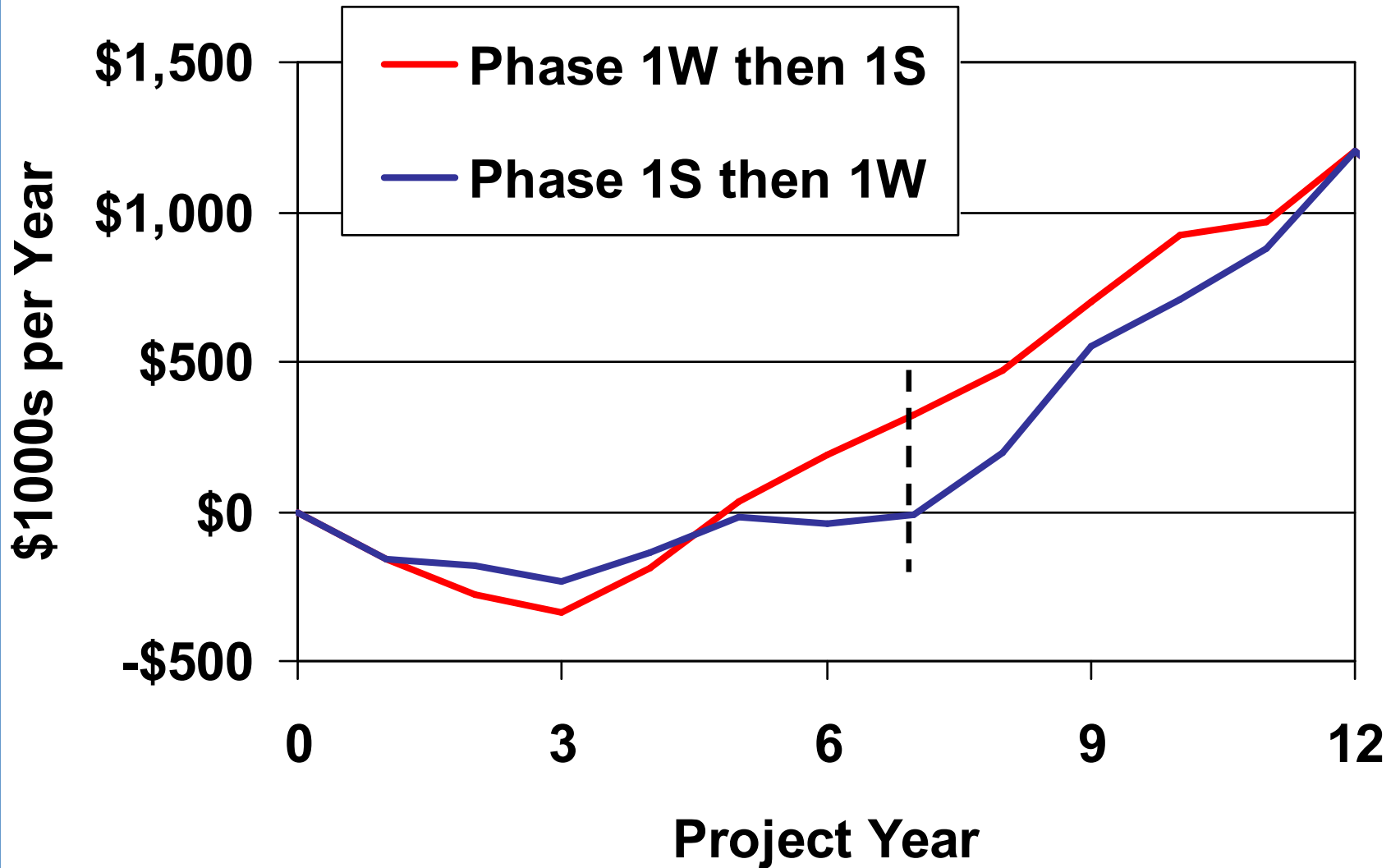


Assumptions:

- Existing demands converted within 2 years
- Future demands materialize over 15 years



Phase 1W Financially Stronger (Net Operating Revenue shown)



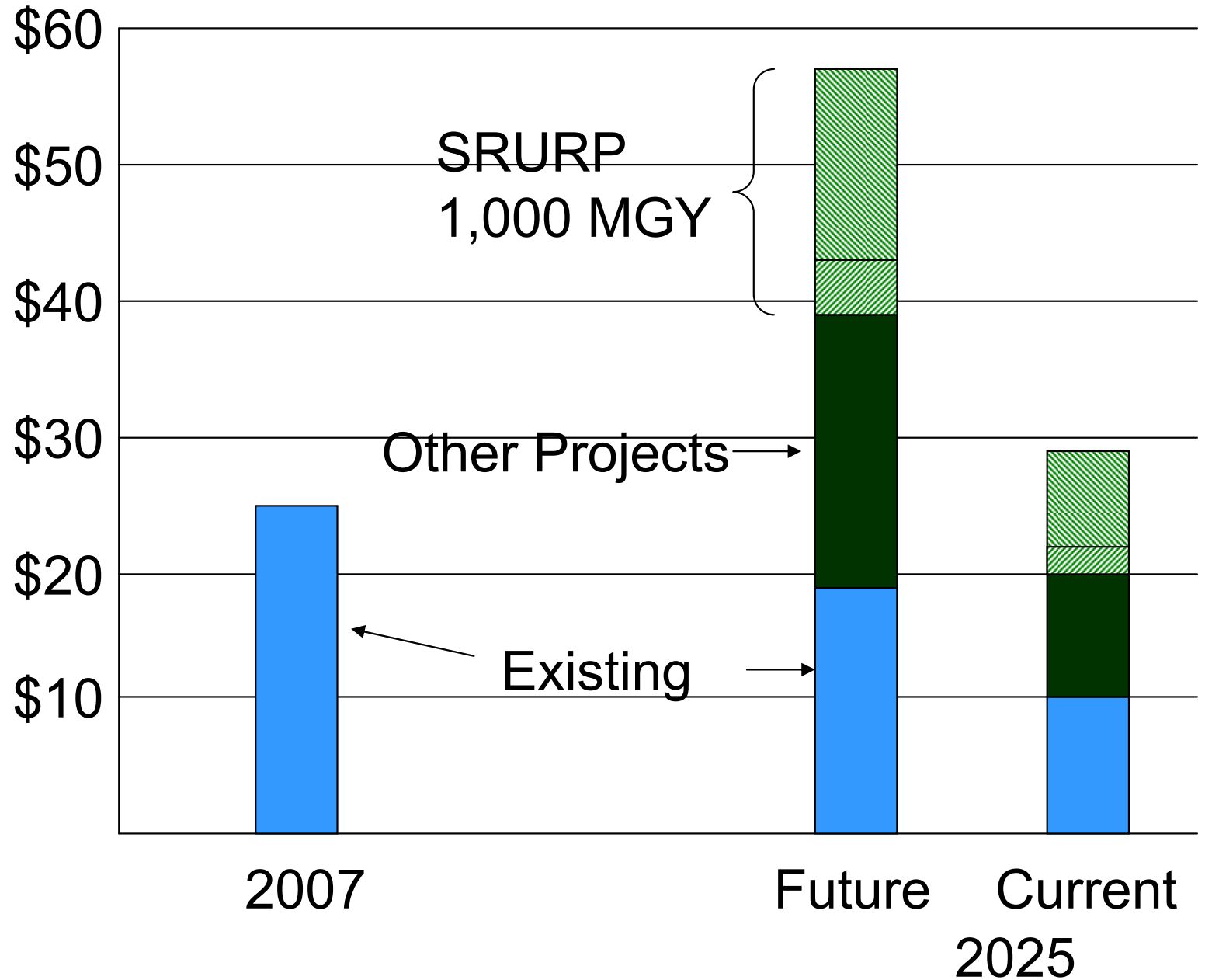
Assumptions:

Existing demands converted within 2 years

Future demands materialize over 15 years



Water & Subregional Annual Debt Service





Potential Bond Sales Schedule (\$ millions future)

	2008	2010	2012	2014	Total
1 st Study Session	\$6.2	\$20.3		\$16.4	\$43
Phase 1W	\$5.7	\$22.5	\$18.1		\$46.3
Phase 1S	\$5.7	\$21.1	\$12.5	\$7.4	\$46.7





Comparison of Phase 1 Alternatives

	Phase 1 West	Phase 1 South
Unit Cost	0	0
CIP Coordination	-	+
Timing	+	-
Flexibility	+	-
Revenue	+	-



Next Steps

- Today
 - Board discussion
 - Board identify preferred Phase 1 alternative
- December 4th – Council feedback
- December 6th – Board consider
 - Formal approval
 - Council recommendation
- December 18th – Council consider formal approval





Santa Rosa Urban Reuse Project

- Should the City build the first phase of the SRURP?

Yes, pending cost-share agreement

- What is the first SRURP phase?

Phase 1 West

- When should the first SRURP phase be constructed?

Begin design Pilot Project in 2008,

- Report to Board as RWQCB addresses incidental runoff
- Pace implementation consistent with need

