



## Santa Rosa Urban Reuse Project – Project Selection

Board of Public Utilities

December 6, 2007



## Santa Rosa Urban Reuse Project

- 1,000 MG/yr (3,000 AF/yr)
  - 100% Potable offset
  - Four 250-MG phases
  - Expandable to 1,500 MG
- Capacity and timing flexible to match disposal and supply need
- Urban Reuse allows local community to
  - Reduce impacts of its wastewater
  - Be more responsible for its own water supply
  - Be more self-sufficient
  - Reduce ecological footprint
- Santa Rosa's Green Building Program gives multi-family residences points for recycled water irrigation
- LEED gives commercial/institutional buildings points for recycled water irrigation



2



## Santa Rosa Urban Reuse Project – Board Preferences on Nov 15

- Should the City build the first phase of the SRURP?  
*BPU intends to recommend approval*
- What is the first SRURP phase?  
*BPU intends to recommend Phase 1 West*
- When should the first SRURP phase be constructed?  
*BPU intends to recommend*
  - *Design start in early '08*
  - *Construction begin only after RWQCB addresses incidental runoff*



3



## Council Feedback

- Presented Board preferences to Council on Dec 4
- Council unanimously approved motion preliminarily approving Phase 1 West as proposed by Board



4



## Document Availability

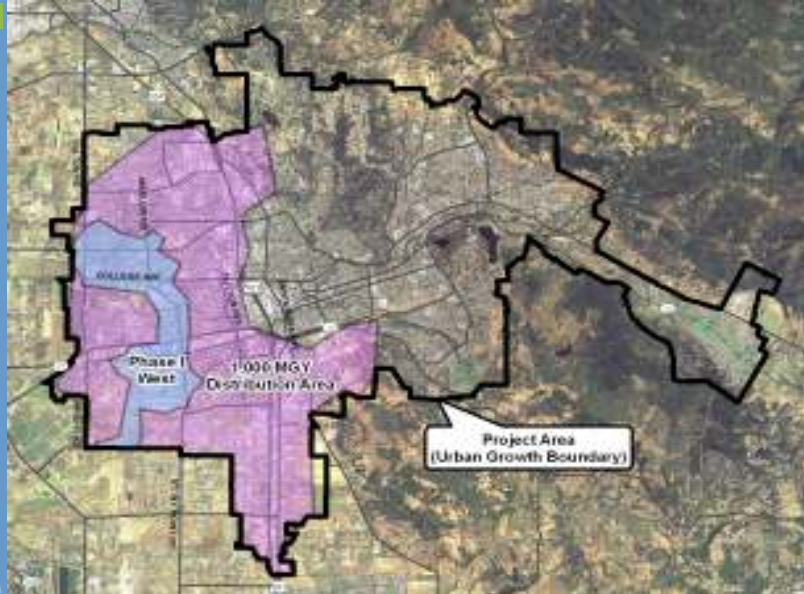
- E-mail notice to public Oct 26
- ¼-page ad in PD on Nov 9
- Predesign Study Tech Memos – Nov 15
  - CD and hard copies
  - [www.SRCity.org/UrbanReuse](http://www.SRCity.org/UrbanReuse)
  - Purchase hard copy – ARC, 579-9096
- CEQA Checklist – Nov 20
  - Hard copies to Board and Council (Nov 30)
  - [www.SRCity.org/UrbanReuse](http://www.SRCity.org/UrbanReuse)
  - Purchase hard copy – ARC, 579-9096
  - Libraries

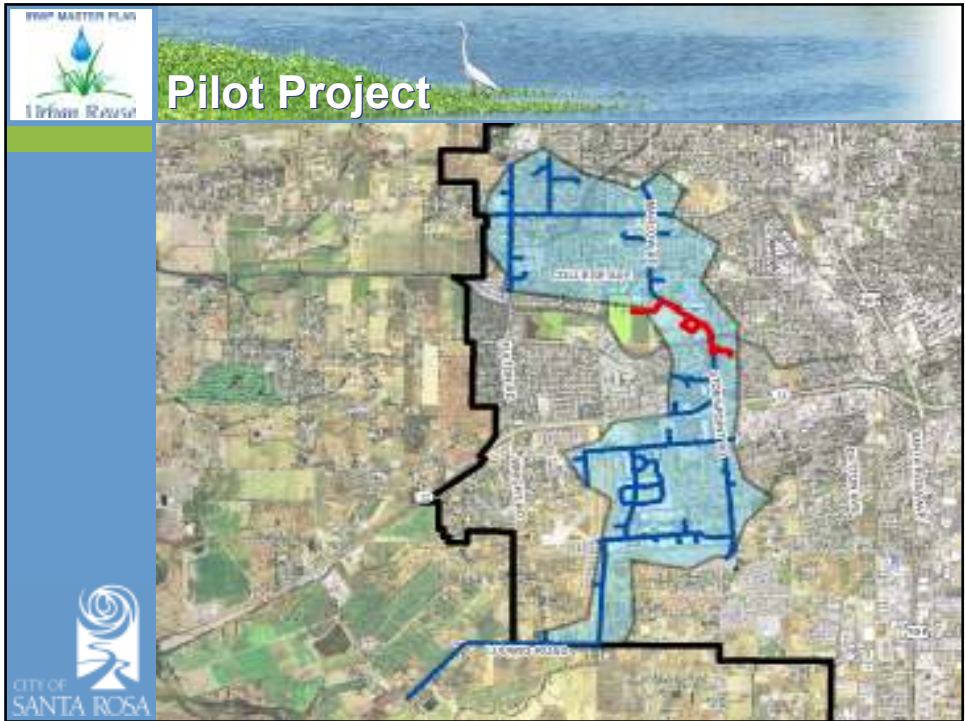
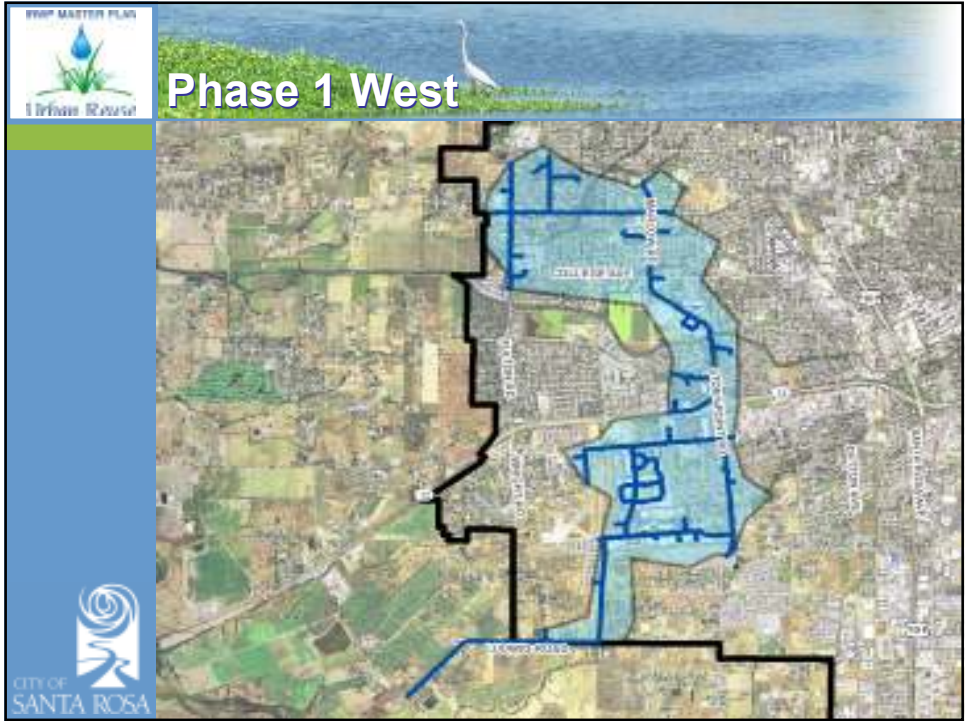


5



## 1,000 MGY Project + Phase I West









**Project Cost (current dollars)**

| Description                     | Phase 1 West<br>(x \$1,000) | All 4 Phases<br>(x \$1,000) |
|---------------------------------|-----------------------------|-----------------------------|
| Transmission/Distribution Mains | \$22,000                    | \$95,000                    |
| Pipelines and Services          | \$7,365                     | \$31,000                    |
| Customer Retrofits              | \$785                       | \$3,800                     |
| Pump Stations/PRVs              | \$4,850                     | \$5,100                     |
| Treatment Facilities            | \$1,655                     | \$3,100                     |
| Storage Tanks                   | \$0                         | \$14,600                    |
| <b>Total (ENRCCI = 9100)</b>    | <b>\$36,655</b>             | <b>\$152,600</b>            |


**FWP MASTER PLAN**  
  
 1 Drive 12/20/12

## Pilot Project Budget

|                                     |                    |
|-------------------------------------|--------------------|
| <b>Design and Customer Outreach</b> | <b>\$450,000</b>   |
| <b>Construction</b>                 | <b>\$2,920,000</b> |
| <b>Total</b>                        | <b>\$3,370,000</b> |

  
 CITY OF SANTA ROSA


11

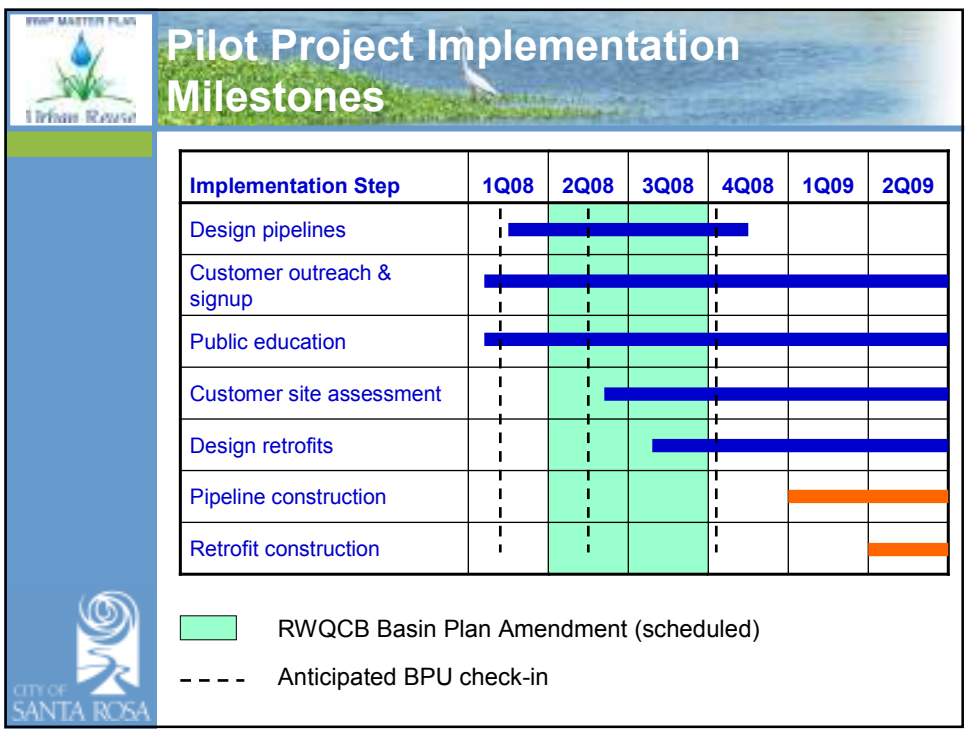
**FWP MASTER PLAN**  
  
 1 Drive 12/20/12

## Phase 1 West Implementation Milestones

| Implementation Step        | 2008       | 2009         | 2010         | 2011 | 2012 | 2013 |
|----------------------------|------------|--------------|--------------|------|------|------|
| Condition Development      | [Blue bar] |              |              |      |      |      |
| Customer Relations/Sign-up | [Blue bar] |              |              |      |      |      |
| Operations Staffing        | [Blue bar] |              |              |      |      |      |
| Pilot Project Design       | [Blue bar] |              |              |      |      |      |
| Pilot Project Construction |            | [Orange bar] |              |      |      |      |
| Design next segments       |            | [Orange bar] |              |      |      |      |
| Construct next segments    |            |              | [Orange bar] |      |      |      |

RWQCB Address  
 Incidental Runoff

  
 CITY OF SANTA ROSA



## CEQA Documentation

- Phase 1 is less extensive than that evaluated in the IRWP Program EIR
  - Program EIR evaluated 2,200 MG
  - Phase 1 is 250 MG
- Evaluation of Phase 1
  - No new significant impacts
  - No substantially more severe impacts
  - No new mitigation measures required
  - Within the scope of the Program EIR
- CEQA Checklist is the appropriate document
  - Includes extensive runoff control measures as part of the Project (see page 3-31 thru 3-36)



## CEQA Documentation for Changes to Project

- Changes during design and construction may require CEQA documentation
- Delegation of authority to Utilities Director to approve CEQA documentation and Project changes
- No change to design or construction contracting approach



15



## Resolution

- Approve Phase 1 West
- Direct construction not begin until after RWQCB addresses Basin Plan
- Request staff communicate Board's position to RWQCB
- Make CEQA Findings of Fact
- Adopt Statement of Overriding Considerations
- Adopt Mitigation Monitoring Program
- Request staff initiate Pilot Project design
- Authorize Utilities Director to approve changes to CEQA documents and Phase 1 West
- Recommend Council approve project



16



## Next Steps

- Today – Consider adoption of resolution
- Dec 18 – Council decision

