

READING and understanding your water meter is an important part of using our water resource efficiently and effectively.

MONITOR water use as closely as you like: daily, monthly or seasonally.

DETECT leaks that may be silent or invisible.

JOIN all of Santa Rosa in using our water resource efficiently.

For more information regarding free services and programs that the City of Santa Rosa's Water Conservation Program offers, please call the Water Conservation Hotline at (707) 543-3985 or visit our website at srcity.org/wc.

HOW MUCH WATER IS USED??

INSIDE THE HOME...

Running the tap.....1.5-6 gallons per minute
Taking a shower.....2-7 gallons per minute
Taking a bath.....20-60 gallons per bath
Washing a full load of clothes.....15-60 gallons per load
Flushing the toilet.....1.28-7 gallons per flush
Running an automatic dishwasher.....11-14 gallons per load

OUTSIDE THE HOME...

Running the hose5-10 gallons per minute
Watering 1,000 square feet of grass
 in summer.....850 gallons per week
 in fall..... 400 gallons per week
Watering 1,000 square feet of shrubs
 in summer.....450 gallons per week
 in fall..... 200 gallons per week
Watering a mature fruit tree (15' canopy)
 in summer.....131 gallons per week
 in fall..... 41 gallons per week

How to Read Your City of Santa Rosa Water Meter



To Read Your Meter Follow These Simple Steps

WATER: Use it Wisely!

1. Locate Your Meter

The water meter is usually located near the curb in front of the house or place of business. It is in the ground housed in a concrete box marked WATER. Carefully remove the meter box lid using a tool such as a screwdriver. Some meters have wires attached to the lid for the antenna. Remove the lid slowly and gently to avoid breaking the wires. Visually examine the area around the meter to ensure your safety. (Black widow spiders are known to nest in meter boxes.)

2. Read Your Meter

Reading a water meter is similar to reading an automobile odometer. Most meters have a seven-digit number on the face called the *readout* (see illustration). This shows the total number of gallons used since the meter was installed. When water passes through a traditional meter, all of the numbers revolve except the last one on the right which is fixed to zero. The large sweep hand registers for this last increment - revolving one time for every ten gallons used. TouchRead and RadioRead meters do not have a sweep hand and therefore all numbers on the readout move.

3. Figure Your Water Use

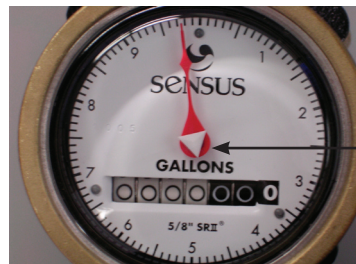
To calculate your water use, pick a starting point at which to read your meter; record the

reading and date. Read the meter a week later, subtract the first reading from the second to find out how much water was used. Multiply by four to approximate your monthly water use. For example:

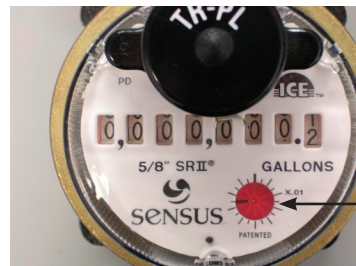
Second reading..... 1168180

First reading..... 1167150

(Note: Santa Rosa charges for water by the 1,000 gallon unit. 1,030 gallons would be rounded off to one billing unit on your bill.)



Traditional Meter



TouchRead or RadioRead Meter

Low Flow Indicator

4. Monitor Your Water Use

Read your meter on a regular basis to track your water use and keep a record of all readings. You will be able to detect trends from season to season and year to year.

If your household changes in any way that affects water use (e.g., new family member, plumbing upgrade, etc.), you will be able to determine the change.

5. Check for Household Leaks

The little triangle on the face of the meter is a *low flow indicator*. It will rotate with even a very low flow through the meter (i.e., leaky toilet or irrigation valve). To check for leaks, turn off all known water uses inside and outside the house. If you have an automatic icemaker, make sure it is not operating. When all water is turned off, the low flow indicator should not move.

If the low flow indicator is moving, there is water flowing somewhere on your property. Try turning off the house shut-off valve (usually located where the water line enters the house). If the low flow indicator continues moving with the house valve off, water is flowing outside the house (most likely the irrigation system). If the low flow indicator stops moving with the house valve off, water was flowing inside the house. (This could be a toilet leak, a leaky pipe, or any number of problems.)

When you have finished reading the meter, put the meter cap down and carefully replace the meter box lid.