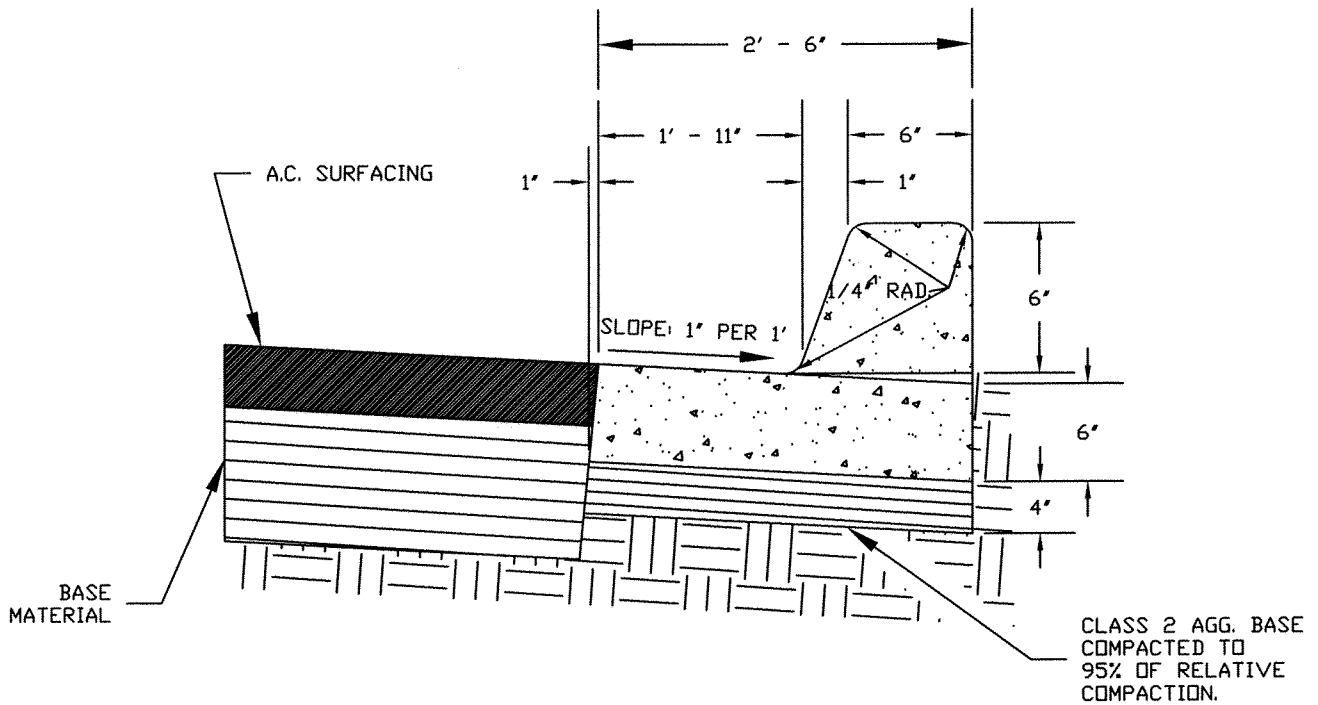


NOTES:

1. TRAFFIC SIGNAL CONTROLLER & SERVICE CABINET MAY HAVE ALTERNATE LOCATIONS IF APPROVED BY THE CITY ENGINEER.
2. THE MINIMUM CURB RETURN RADIUS FOR REGIONAL & INDUSTRIAL STREETS SHALL BE PER SECTION VII. INTERSECTIONS, SUBPARAGRAPH C., "CURB RETURNS."
3. FOR RADII GREATER THAN 35' AND DELTA ANGLES GREATER THAN 90°, CURB RETURN PLAN DETAILS SHALL BE APPROVED BY THE CITY ENGINEER.
4. DESIGN SHALL CONFORM TO THESE REQUIREMENTS EXCEPT AS OTHERWISE APPROVED BY THE CITY ENGINEER.

CITY OF SANTA ROSA		
CURB RETURN PLAN DETAIL		
Scale: NONE	Date: JAN 2004	
DWN. SCA CHK.	APPROVED <i>Alaberg</i>	FILE NO. STD.- 240



NOTES:

1. DESIGN SHALL CONFORM TO THESE REQUIREMENTS EXCEPT AS OTHERWISE APPROVED BY THE CITY ENGINEER.
2. SEE CITY STD.-235 FOR LOCATION OF WEAKENED PLANE AND EXPANSION JOINTS.
3. ALL CONCRETE SHALL BE CLASS "A" P.C.C.

CITY OF SANTA ROSA

CURB AND GUTTER

Scale: NONE

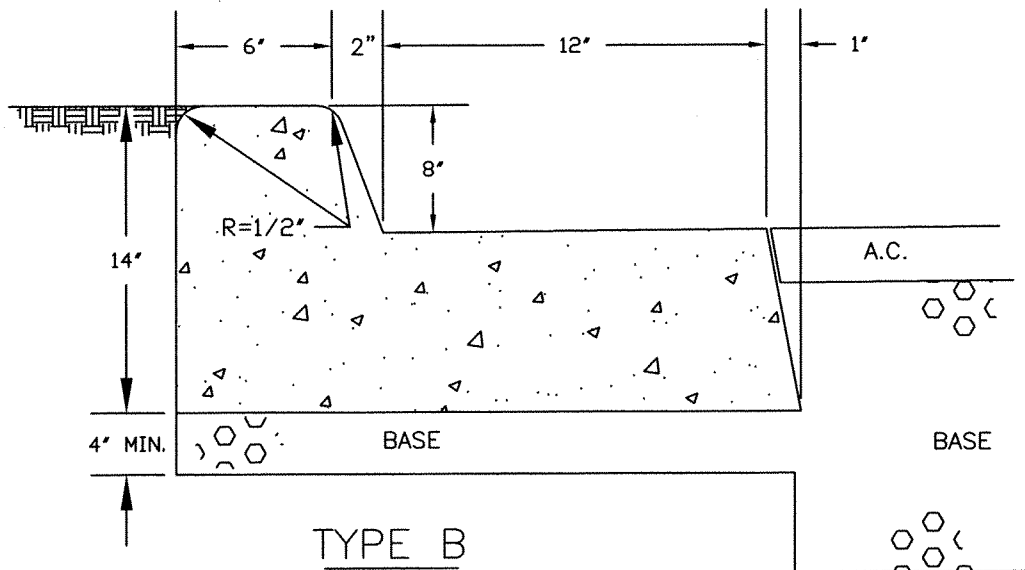
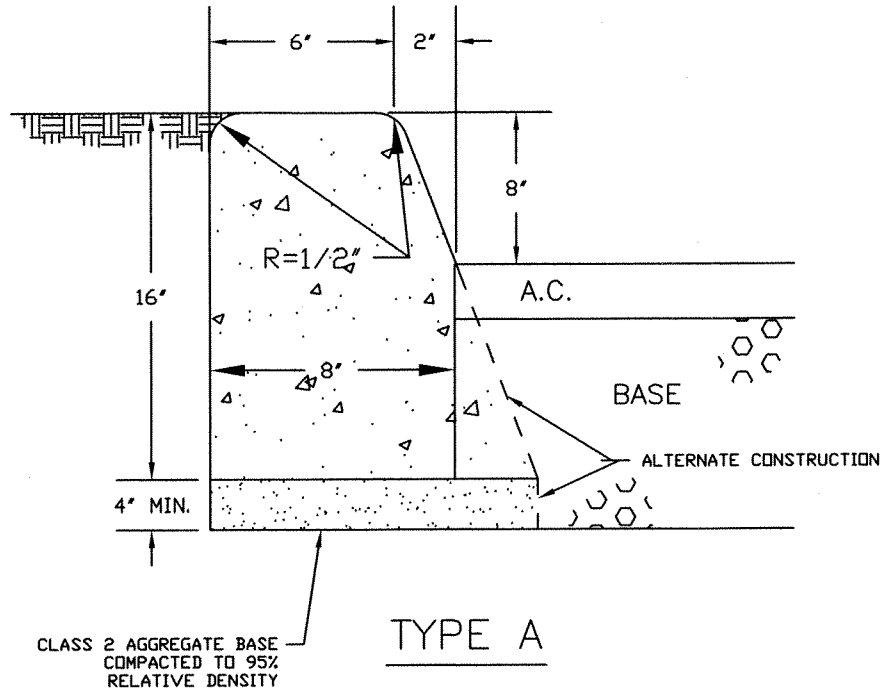
Date: JAN 2004

DWN. SCA
CHK.

APPROVED

Adla Breng

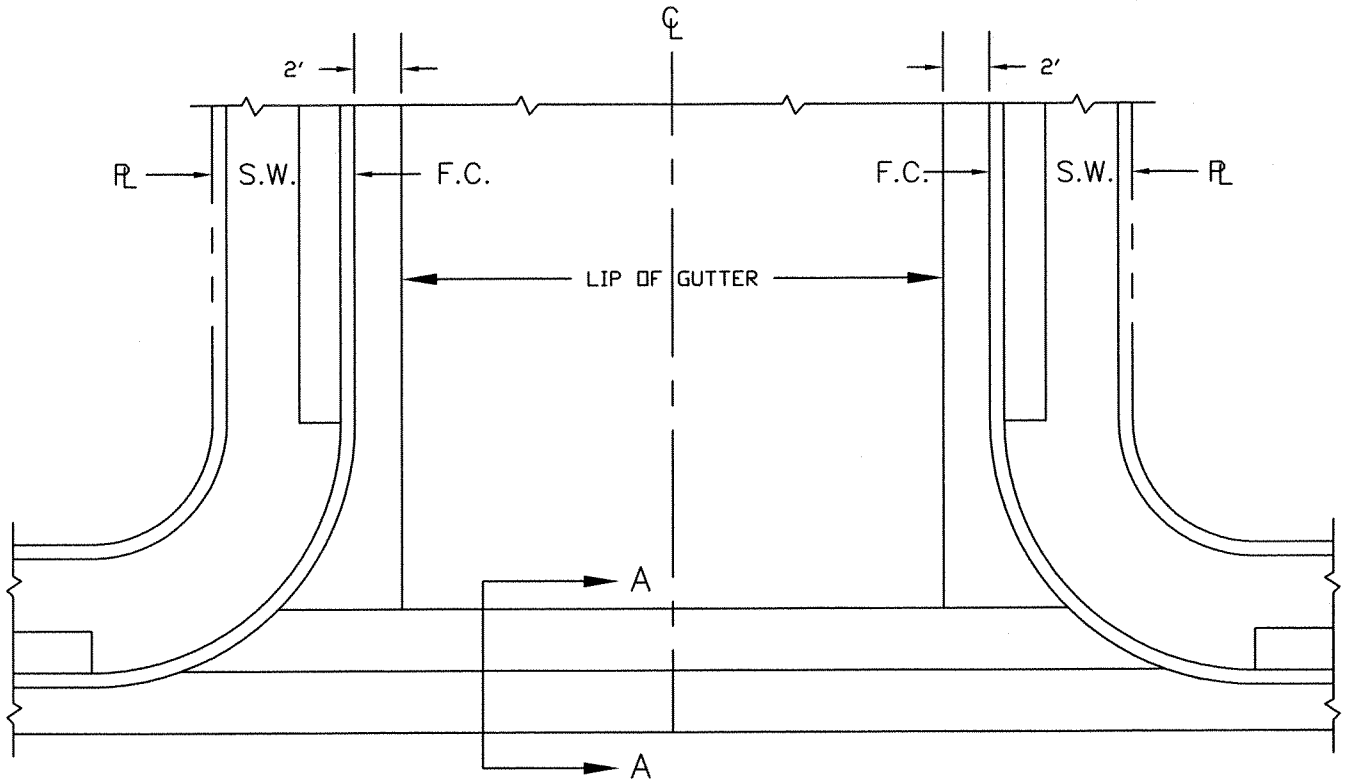
FILE NO.
STD.- 241



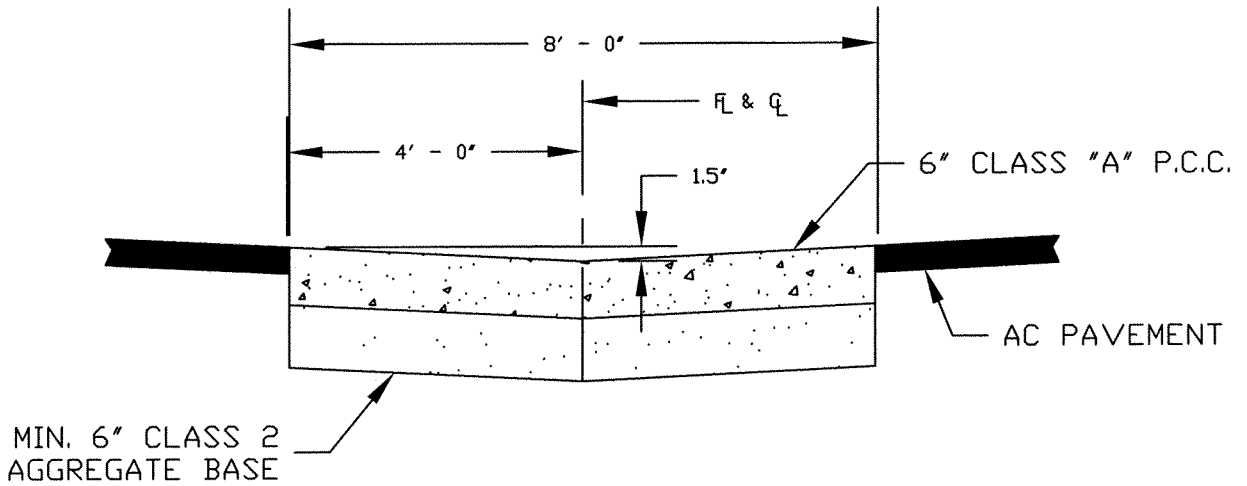
NOTES:

1. TYPE A OR B TO BE USED AT CONTRACTOR'S OPTION UNLESS SPECIFICALLY STATED ON THE PLANS.
2. SEE CITY STD.-235 FOR LOCATION OF WEAKENED PLANES AND EXPANSION JOINTS.
3. THESE DETAILS APPLY TO NEW CONSTRUCTION AND RECONSTRUCTION PROJECTS ONLY. MEDIAN CURB TO BE DETAILED ON PLANS WHERE INSTALLED ON EXISTING PAVEMENT.
4. DESIGN SHALL CONFORM TO THESE REQUIREMENTS EXCEPT AS OTHERWISE APPROVED BY THE CITY ENGINEER.
5. ALL CONCRETE SHALL BE CLASS "A" P.C.C.
6. WHERE THE MEDIAN ISLAND IS TO BE PAVED, THE MEDIAN AND THE CURBS ARE TO BE POURED AS A UNIT (NO COLD JOINT).

CITY OF SANTA ROSA	
STREET MEDIAN CURB	
Scale: NONE	Date: JAN 2004
DWN. SCA CHK.	APPROVED <i>M. Mabera</i>
FILE NO. STD.- 242	



PLAN



SECTION A-A

NOTES:
 DESIGN SHALL CONFORM TO THESE REQUIREMENTS
 EXCEPT AS OTHERWISE APPROVED BY THE CITY
 ENGINEER.

CITY OF SANTA ROSA		
STANDARD VALLEY GUTTER		
Scale: NONE	Date: JAN 2004	
DWN. SCA CHK.	APPROVED <i>Mabera</i>	FILE NO. STD.- 243